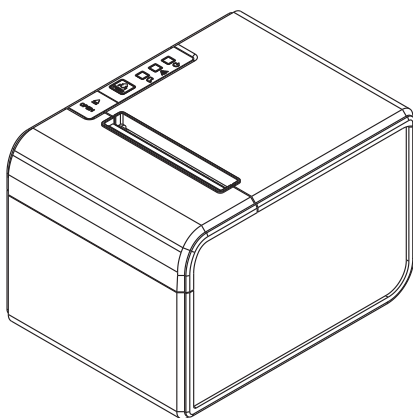


# User's Manual

## **P13-USL** THERMAL RECEIPT PRINTER



**Proficient in Commercial POS Receipt Printers**

## 1. Safety Notice:

- \* Don't touch the printer head with anything.
- \* Don't touch the cutter blade.
- \* Don't bend the power cord excessively or place any heavy objects onto it.
- \* Don't use the printer when it is out of order. This can cause a fire or and electrocution.
- \* When connecting or disconnecting the plug, always hold the plug but not the cord.
- \* Keep the desiccant out of children's reach.
- \* Use only approved accessories and do not try to disassemble, repair or remodel it by yourself.
- \* Install the printer on the stable surface. Choose firm, level surface where avoid vibration.
- \* Don't let water or other foreign objects into the printer.
- \* Don't connect a telephone line into the peripheral drive connector.
- \* We recommend that you unplug the printer from the power outlet if no use it for a long period .

## 2. Applications:

- \* POS system Receipts
- \* EFT POS system Receipts
- \* Gym, post, hospital, civil aviation system Receipts
- \* Inquiry, Service system Receipts
- \* Instrument test Receipts
- \* Tax, Tab Receipts

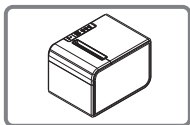
## 3. Unpacking

After unpacking the unit, check that all the necessary accessories are included in the package.

<b>Printer</b>	1 PCS
<b>Data Cable(USB/Serial cord)</b>	2 PCS

## 4. Features

- \* Compact size, abundant function
- \* 300mm/sec high-speed printing
- \* High print quality
- \* Low working noise
- \* Support cashdrawer kick-out
- \* Easy maintenance
- \* Various interface available ( Serial+USB+Ethernet)
- \* Built-in ata buffer
- \* Support character enlargement, bold, underline, line spacing and character spacing
- \* Support NV images download
- \* Low energy consumption and low operation cost
- \* Compatible with ESC/POS command set
- \* Character per line and character set can be set by DIP switches
- \* Support Ethernet Printing status monitor, multiple connection printing and OPOS printing
- \* Support printer identification, software binding and high-speed driver mode
- \* Support various character sets (include GB18030)
- \* Connect and print Faster, stop receipt misprinting
- \* Built in web page to set up printer directly



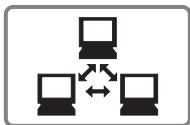
Streamlined structure design



High-speed Printing



Printer Identification



Multiple Connection Printing



OPOS Driver



Various Character Sets

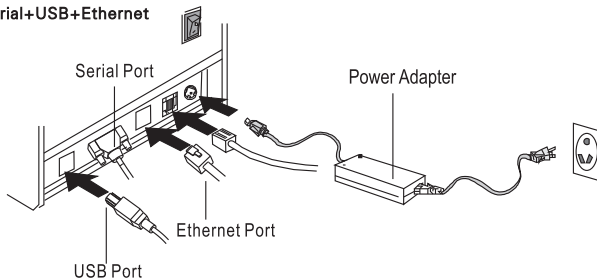
## 5.Specifications

<b>Model</b>	<b>P12-USL</b>
<b>Printing speed</b>	300mm/sec
<b>Paper roll</b>	<b>Paper width:</b> 79.5+0.5mm <b>Max diameter:</b> 83mm
<b>Printing width</b>	72mm/64mm
<b>Dot pitch</b>	576dots / line&512dots / line
<b>Character size</b>	ANK Character, <b>Font A:</b> 12×24dots, <b>Font B:</b> 9×17dots, <b>Chinese:</b> 24×24dots
<b>Print command</b>	Compatible with ESC/POS
<b>Interface</b>	Serial+USB+Ethernet, Parallel+USB
<b>Auto cutter</b>	Partial
<b>Reliability print</b>	150Km
<b>Barcode mode</b>	UPC-A/UPC-E/JAN13(EAN13)/JAN8(EAN8)/CODE39/ ITF/CODABAR/CODE93/CODE128/QRCODE
<b>Paper thickness</b>	0.06~0.08mm
<b>Powersupply</b>	DC 24V/2A
<b>Power adapter</b>	<b>Input:</b> AC110V~220V, 50~60HZ <b>Output:</b> DC 24V/2A
<b>Cash drawer</b>	DC 24V/1A
<b>Work temperature</b>	<b>Temperature:</b> 0~45℃, <b>Dampness:</b> 10~80%
<b>Storage temperature</b>	<b>Temperature:</b> -10~60℃, <b>Dampness:</b> 10~90%
<b>Dimensions</b>	140X184X126(WXHXH)

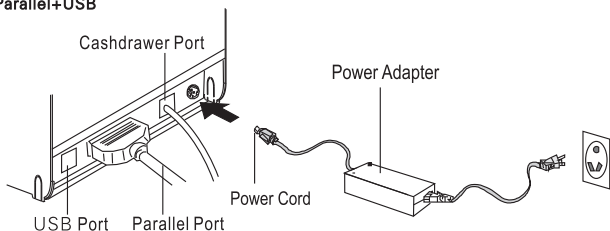
## 6. Printer Connection

- Plug the DC cord connector into the printer's power connector.
- Plug the data cable connector into the printer's interface connector.
- Plug the drawer cable into the drawer kick-out connector on the back of the printer next to the interface connector.

**a: Serial+USB+Ethernet**

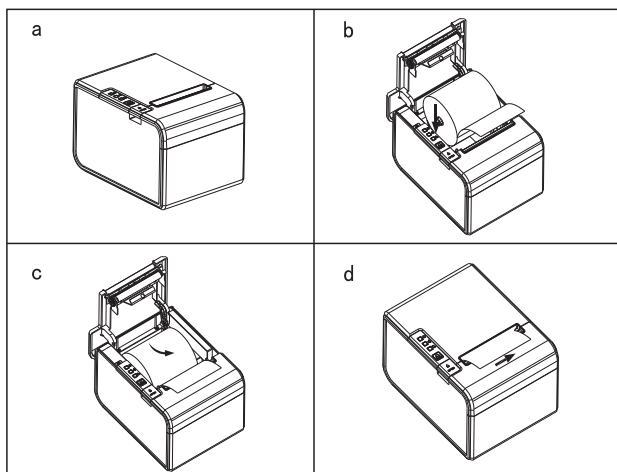


**b: Parallel+USB**



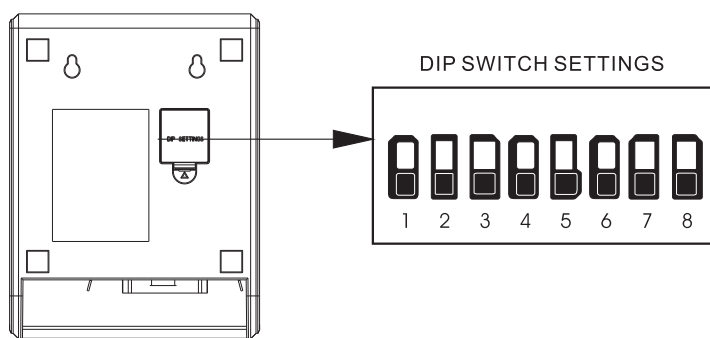
## 7. Installing the roll paper

- Press the button to open the top cover.
- Install the roller in the roll paper, and put them into the printer.
- Pull out some paper outside the printer and then close the printer cover.
- Close the top cover. Press the printer cover to avoid error position of roll paper.



## 8. Setting the Printing Mode (DIP switches)

The DIP switches are used to set the printer to perform various functions, such as cutter mode, character set, speed, beeper, print density and etc.



## DIP Switch Functions

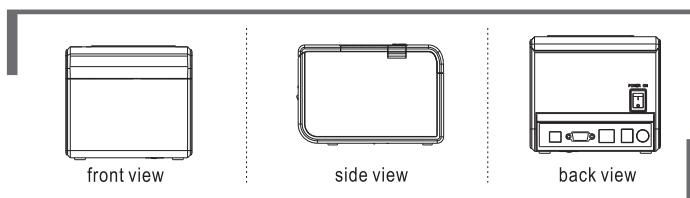
Switch	Function	ON	OFF	Default
SW-1	Select cutter	No	Yes	OFF
SW-2	Select beeper	Yes	No	OFF
SW-3	Print density	Dark	Light	OFF
SW-4	Two-byte character code	No	Yes	OFF
SW-5	Character per line	42	48	OFF
SW-6	Cutter with cash drawer	Yes	No	OFF
SW-7	Select Baud rate			OFF
SW-8	Select Baud rate			OFF

SW-7	SW-8	Baudrate(bps)
ON	ON	38400
OFF	ON	115200
ON	OFF	9600
OFF	OFF	19200

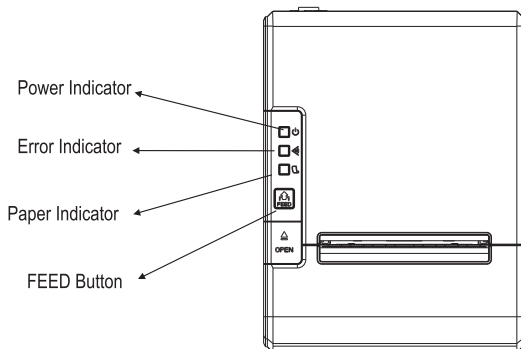
**NOTE:** Before configure the DIP switch settings, please first turn the printer power off and remove the paper roll.

(\*) Baud Rate is only available for serial interface models

## 9. Printer view



## 10. Buttons and Indicators



## 11. Functions of buttons and indicators

### (1) . FEED Button

Press to feed paper manually.

### (2) . PAPER Indicator

When this indicator is lighting as well as the ERROR indicator, printer is out of paper.

When this indicator is dim as well as the ERROR indicator, printer has paper.

When this indicator is lighting but the ERROR indicator is dim, roll paper is near end.

### (3) . POWER Indicator

When this indicator lights, the printer is turned on.

When this indicator dims, the printer is turned off.

### (4) . ERROR Indicator

When printer is in the status of paper out, cutter error or print head overheat, this indicator is flashing according to user's defined setting.

## 12. Cutter Maintenance

### Step (1)

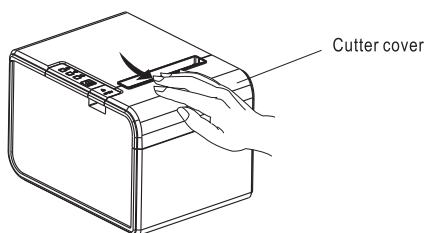
- a. Turn off then on the printer, the printer will initialize and reset the cutter.

### Step (2)

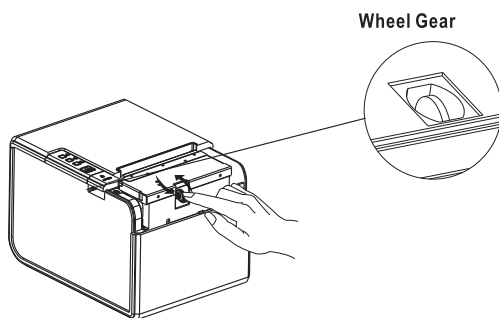
- a. Open the front cover.
- b. Wheel the gear on the cutter to make the cutter back to initial position. Open the printer cover and install roll paper correctly, then the printer works normally.

**▲ Caution:** Do not open the printer cover by force, so as not to damage the print head and auto cutter.





1. Open the cover by the arrow direction



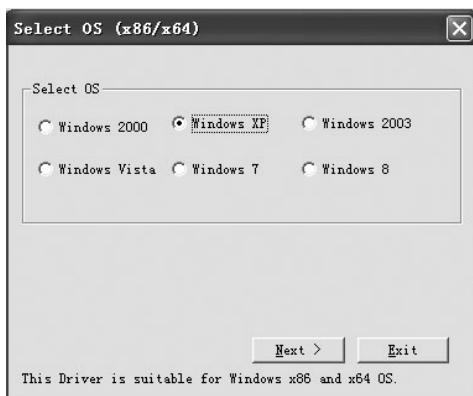
2. Turn the gear to reset the cutter

### 13. Driver Setup

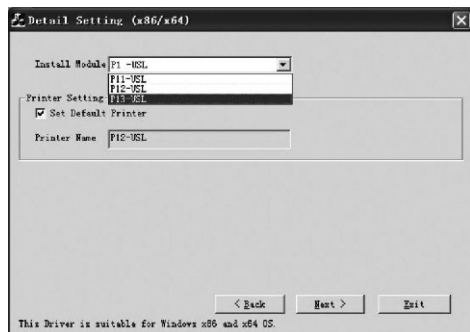
- a. Insert the driver CD disk, run the printer driver V1.0 to set up.



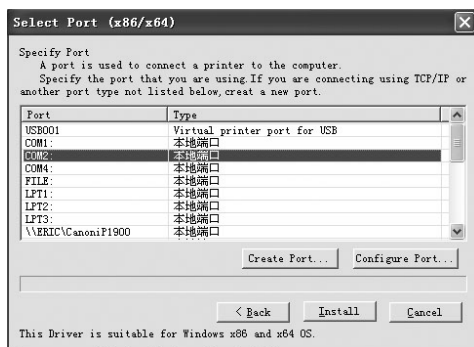
- b. Select the operation system that you're using, then click "next" to continue.



- c. Select P13-USL Series to continue.

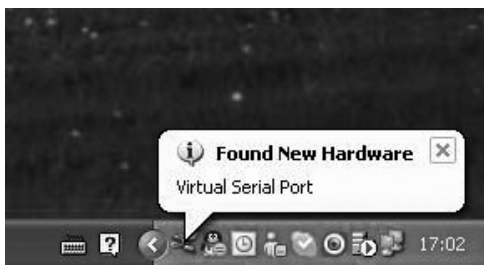


- d. Select the corresponding printer port.



### 13. Virtual serial port driver Setup

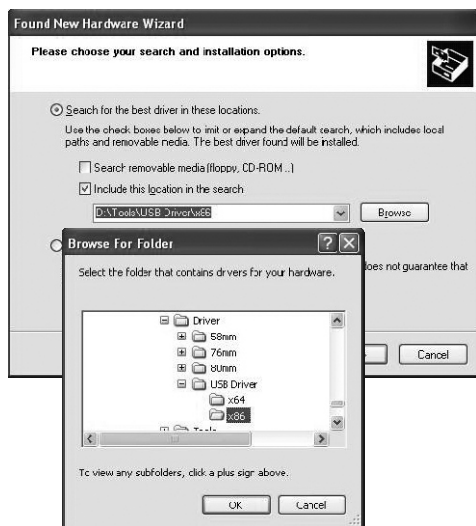
- a. When you connect P12-USL with USB port, 'Found New Hardware' will prompt at the bottom right of the computer.



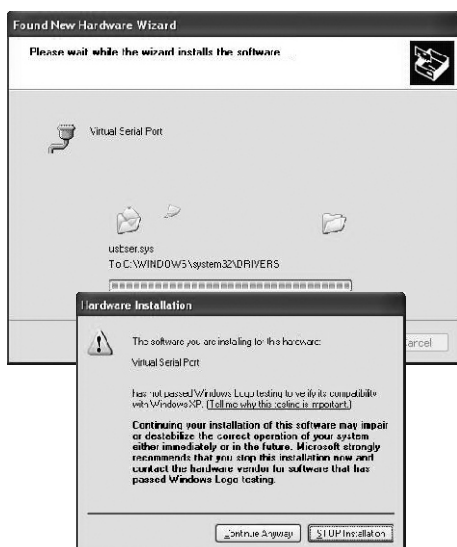
- b. Choose 'Install from a list or specific location (Advanced)' and click 'Next' to continue.



- c. Browse the folder that contains drivers for your hardware, and click 'Next' to continue the USB driver installation.



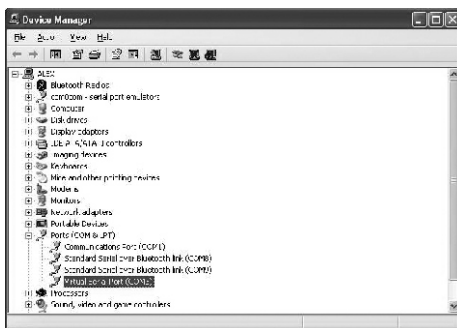
- d. Choose 'Continue Anyway' to continue the driver installation.



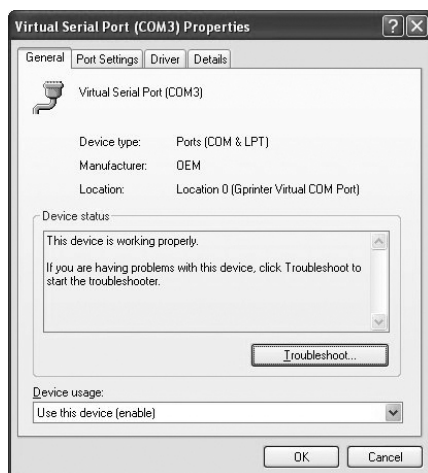
- e. New hardware has finished installing and click Finish to close the wizard.



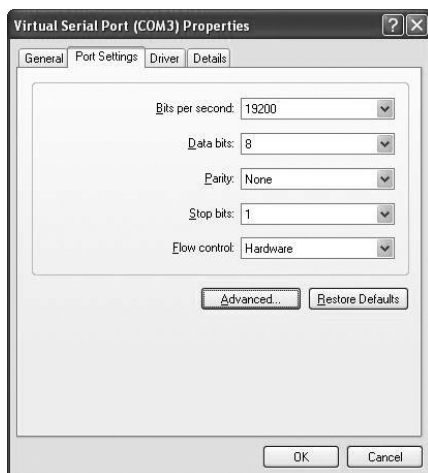
- f. Then comes to Control Board ---- System---Hardware----Device Manager--- Ports (COM & LPT)  
---Virtual Serial Port (COM3). Here you will find COM3 is the right port for printing.



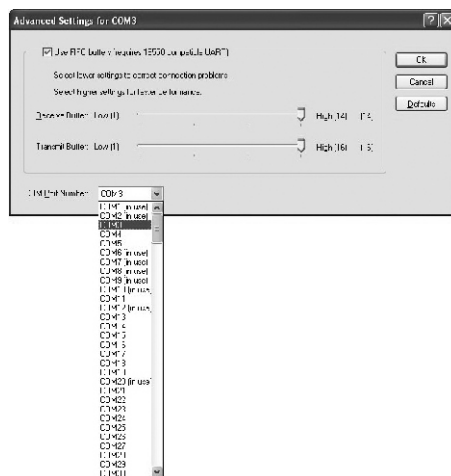
- g. Double click 'Virtual Serial Port (COM3)', it will show 'Virtual Serial Port (COM3) Properties' dialog box.



- h. Choose 'Port Settings', and then choose 'Advanced'



i. Choose COM Port Number 'COM3'.



j. Open the Printer Properties dialog box





k. Choose Ports, and then choose COM3: Serial Port

